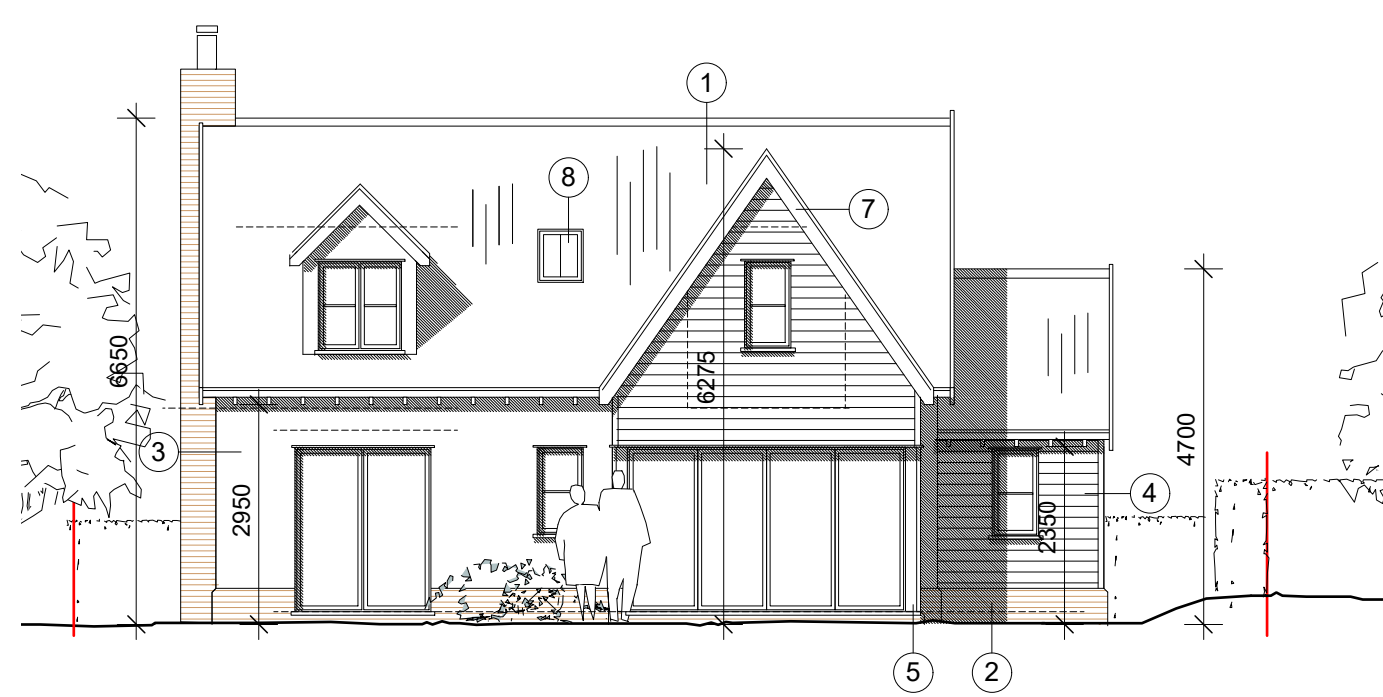
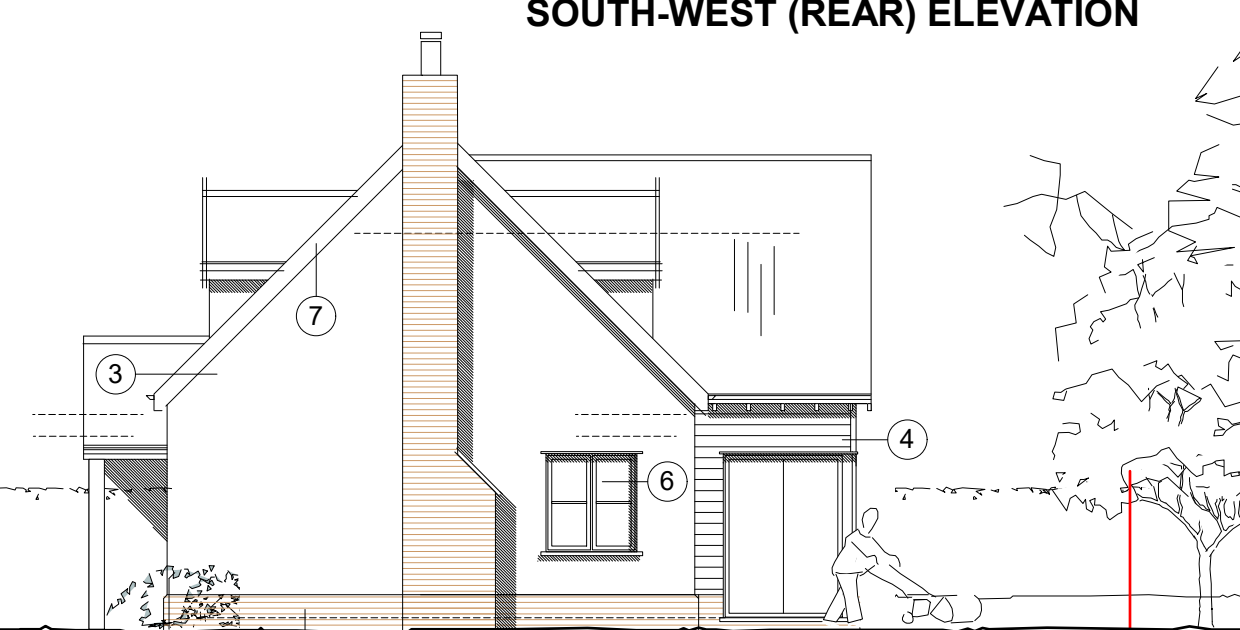
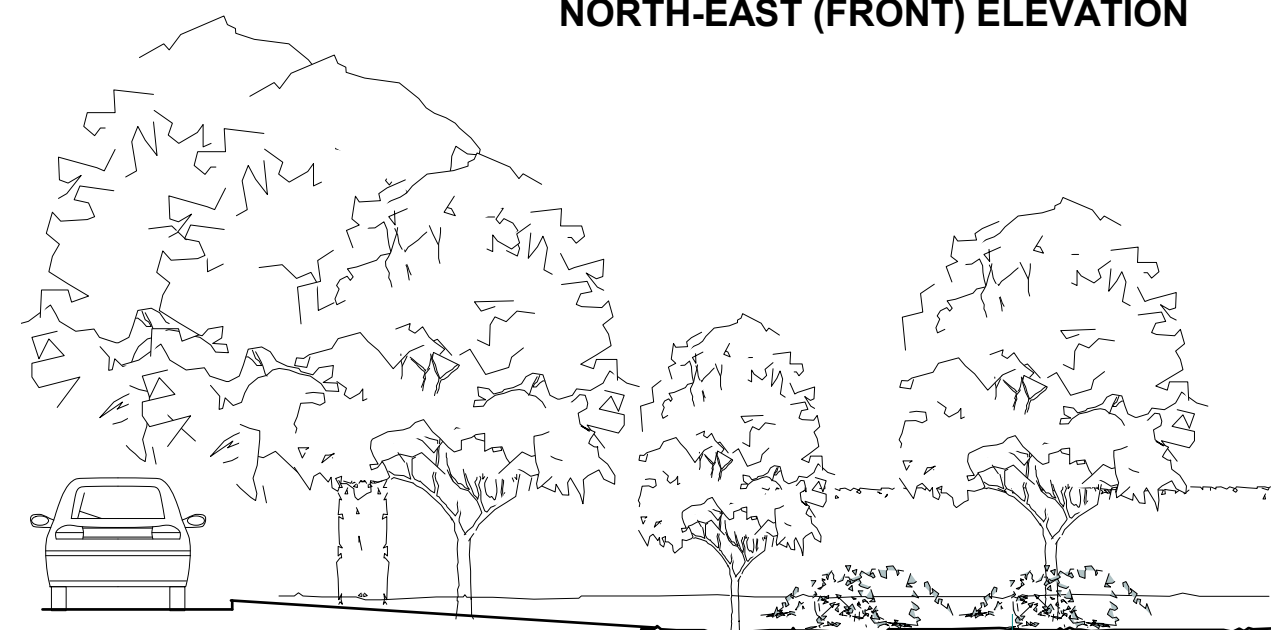




NORTH-EAST (FRONT) ELEVATION



SOUTH-WEST (REAR) ELEVATION

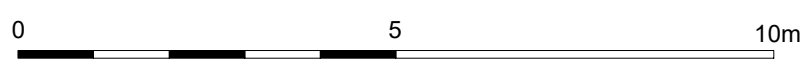


NORTH-WEST (SIDE) ELEVATION



SOUTH-EAST (SIDE) ELEVATION

- KEY TO MATERIALS:**
- 1 - red clay pan tiles (Wienerberger 'arcadia' traditional pantile)
 - 2 - soft red brick with chamfered top course (Imperial bricks ltd - 'soft red multi')
 - 3 - painted red brick with chamfered top course (Imperial bricks ltd - 'soft red multi')
 - 4 - painted feathered edge weatherboarding (Farrow and ball 'Moles breath')
 - 5 - green oak frame, oak front door
 - 6 - painted softwood window frames and doors (Farrow and ball 'Worsted')
 - 7 - painted softwood barge boards/ soffits (Farrow and ball 'Moles breath')
 - 8 - conservation rooflights



Project LAND ADJ HOMESTEAD, CHAPEL RD, STANNINGFIELD		hitchcock architects ltd 18 The Avenue Sunbury-on-Thames Middx TW16 5ES m: 07855 522478 e: andrew@hitchcockarchitects.co.uk w: www.hitchcockarchitects.co.uk
Drawing PROPOSED ELEVATIONS		
Drawing No. CRS-06A	Scale 1:100 @ A3	Date 19.09.2018

